

■ Standard specifications and cost etc. of the equipment

Enhanced the models and achieved a low price by manufacturing at our own factories

We boast a large variety of machinery. Our lineup ranges from small to heavy machinery (20,000kg/day, custom-built plant) to match customers' needs (we provide various testing machinery and experiment facilities.)

Vacudra Ace (standard specification)

Model	Effective	Heat transfer area(m <sup>2</sup> )	Agitating power(kw)	Size of the main body drum (mm)
KVD- 05Y	0.05	0.85	0.75	350 φ × 600
KVD- 1Y	0.11	1.38	2.2	400 φ × 900
KVD- 3Y	0.31	2.86	3.7	520 φ × 1500
KVD- 5Y	0.56	4.32	5.5	600 φ × 2000
KVD- 7Y	0.77	5.46	5.5	640 φ × 2400
KVD- 10Y	1.15	7.35	7.5	700 φ × 3000
KVD- 15Y	1.70	9.13	11.0	850 φ × 3500
KVD- 30Y	3.32	13.97	15.0	1100 φ × 3500
KVD- 50Y	5.57	19.79	22.0	1300 φ × 4200
KVD- 70Y	7.69	25.05	30.0	1400 φ × 5000
KVD-100Y	10.50	30.76	37.0	1560 φ × 5500
KVD-200Y	20.14	48.93	55.0	1850 φ × 7500

※ Please be aware that may change the specifications etc. without previous notice for product improvement.

※ Please inform us of the following if you introduce a customer to us:

Name of processing products \_\_\_\_\_

Amount to be processed \_\_\_\_\_

Moisture content of raw materials \_\_\_\_\_ kg/day

Moisture content of products \_\_\_\_\_ %

Apparent specific gravity \_\_\_\_\_ %

True specific gravity \_\_\_\_\_ %

Physical properties, shapes, granularity, viscosity, and adherability of processing materials \_\_\_\_\_

Source of heat \_\_\_\_\_

Allowable temperature of processing products \_\_\_\_\_ °C

About the quoted price

The price of the equipment is set based on the above-mentioned standard specifications. However, there can be large differences depending on various conditions, such as the installation location (for instance, underground etc.) and the area of construction etc. Therefore, first of all we ask you the details of the requested equipment's processing abilities (for instance, necessity 1000kg per day) and installation locations, etc. and then we will present a separate estimate. However, estimates of the followings are excluded.

- 1: Fundamental construction and building construction
- 2: Construction of electric wiring and water supply drain piping to the equipments location

Regarding the warranty matters

Warranty of each equipment is 1 year after the trial run is handed over.

- Under the warranty, we repair and improve the equipment for free when it is not working properly due to the natural wear and tear or your mistake and carelessness. However, we are not responsible if the equipment is not functioning as it should due to an inevitable force such as a natural disaster etc. or due to damage or breakdown by intent.

Regarding the due date

Approximately 4 months after the contract.



■ Sales & Marketing



Oriental Wave Building 4F, 5-17-13, Shinjuku, Shinjuku ku, Tokyo, 160-022, Japan  
 Phone +81-3-5287-5722 Fax +81-3-5287-5723  
<http://www.cdi.jpn.com>

314, Nakamukae, Ukinoaza, Chiaki-cho, Ichinopmiya City, Aichi, 491-0806 Japan  
 Phone +81-586-77-4248 Fax +81-586-77-6001

Our approach

Fertilizer Fodder

# Vacudra Ace

Vacuum drying equipment



- It is suitable for a large variety of products such as slurry, paste and dehydrated cake etc. !
- Shortening drying time, automatic operation and odorless!
- Enable to freely set up moisture content, reusable as fertilizer and fodder !
- With the vacuum processing structure, there is no need to worry about bad odors or polluted water etc. !

Continuous automatic input and automatic ejection  
 Fully automatic operation

KASSUI PLANT



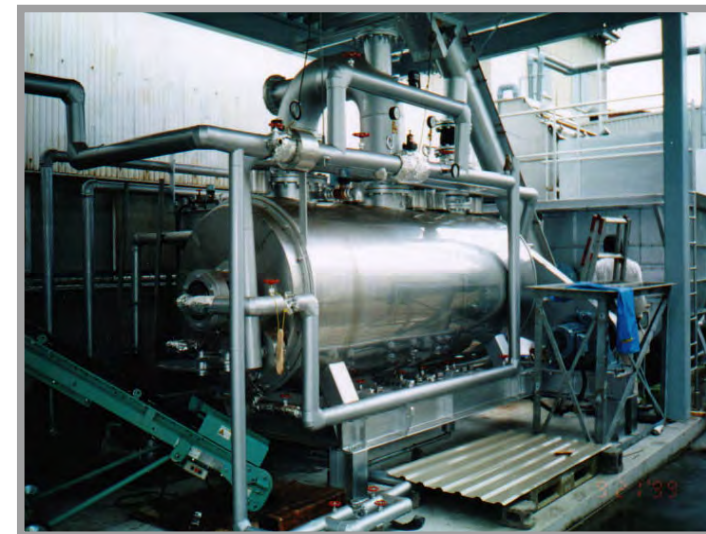
# "Shortening drying time", "Automatic operation" and "Odorless" by vacuum drying

# Vacudra Ace

PAT.

## Features

- **There is no limit in moisture content, so it can process all waste products such as raw garbage, polluted sludge and various residue etc.!**  
Dry processed products are in powder or granular form, so they are easy to handle.
- **Moisture content can be freely set up, so it is suitable for generating fertilizer and fodder!**
- **Waste products discharged every day can be dry processed within a short time frame (10-22 hours)!**  
- 1 batch (1000kg of raw garbage with 85% moisture content can be processed in about 22hours.)
- **There is no need to worry about bad odor or polluted water etc.!**  
There is a only few chances for odor to leak during the process because the whole system is tightly sealed up.
- **Running cost can be reduced because it is a low temperature and decompression type equipment!**
- **This dryer system is compact and space-saving!**
- **Easy operation with an automatic operating system**  
"Continuous inputing" and "ejecting" can be operated automatically by mounting the specialized valve, which is specially made by our company. It can run as soon as the equipment is installed as it is easy to operate.



KVD-10Y (dewatered sludge processing 2t/per day)

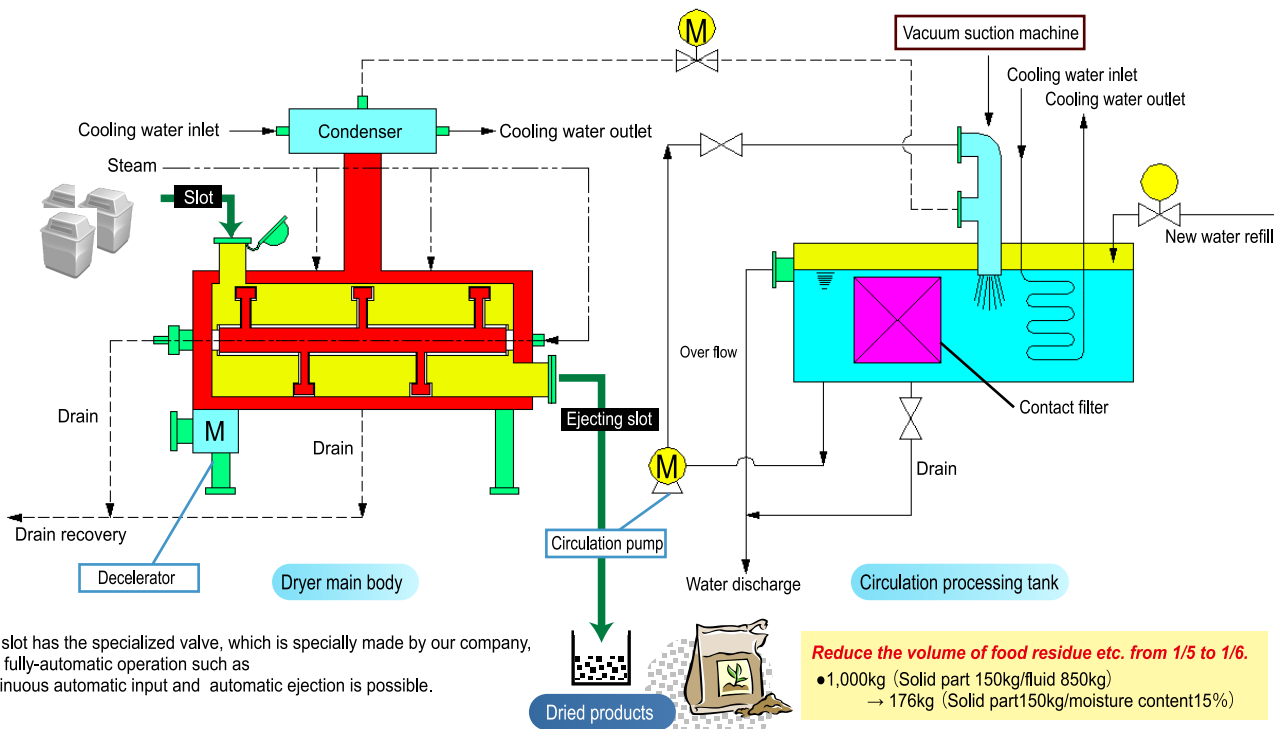
KVD-20Y (vegetable residue processing 3t/per day)



## Vacuum dryer <Basic flow sheet>

Evaporated water is sucked by the vacuum suction machine (ejector). Then it is microorganism deodorized and purified with a special filter in the circulation processing tank and ejected.

**Drying process time 22 hours (1 batch)**  
(raw garbage 1000kg, moisture content 85%)



The slot has the specialized valve, which is specially made by our company, so a fully-automatic operation such as continuous automatic input and automatic ejection is possible.

**Reduce the volume of food residue etc. from 1/5 to 1/6.**  
● 1,000kg (Solid part 150kg/fluid 850kg)  
→ 176kg (Solid part 150kg/moisture content 15%)

## Equipment outline

This is a "cylindrical vacuum agitating dryer" that forcibly agitates raw materials with an internal agitating axle under a vacuum in a sealed container. Drying, agitating, crushing and smashing can be done at the same time. Heating is done by the wall surface conducting indirect method. Steam, warm water and heat media etc. are conducted to the main body trunk jacket, agitating axle and agitating impeller.

## Various dry processing products (part of examples)

- Dried food residue
- Dried sewerage polluted sludge
- Dried okara (bean curd refuse)
- Dried active sludge



Processed products can be recycled by desiccating wastes such as wood, food, Polluted mud, animal products and fishery products.

- Fertilizer
- Fodder
- Soil amendments
- Fermentation accelerator
- etc.

**Recycling Processed products (fertilizer, fodder etc.)**

## Use (example)

This equipment can process waste products such as wood, food and polluted mud...

- [Wood]**
  - bark
  - thinning
  - pruned branch
  - fresh flowers
  - vegetation
  - wood chips
  - wood construction waste etc.
- [Food]**
  - beverage pomace
  - agricultural product scraps
  - food processing scraps
  - fishery product scraps
  - animal product scraps
  - raw garbage etc.
- [Polluted mud]**
  - various polluted mud
  - animal husbandry manure
  - pulp sludge etc.